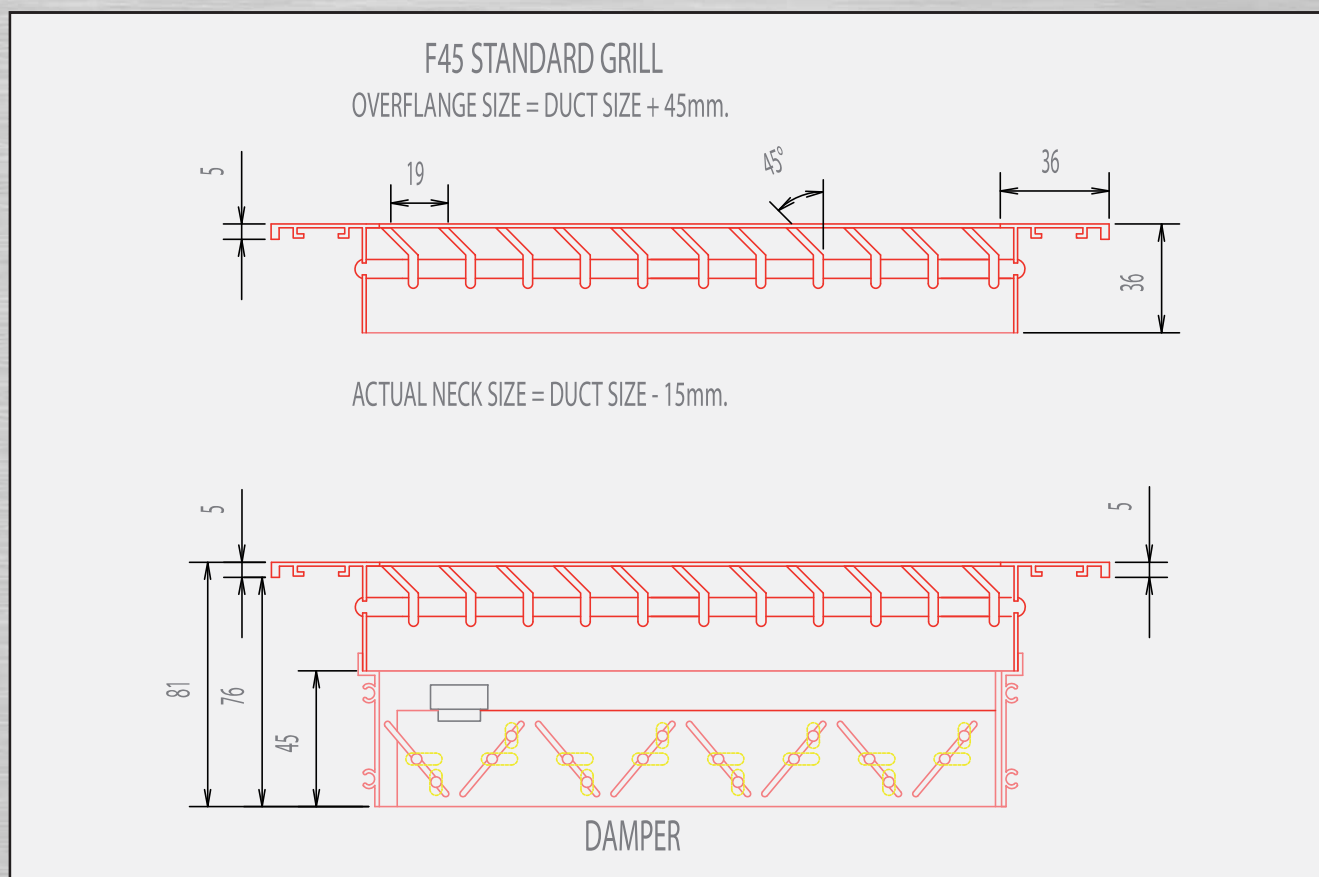


# Standard Grille

CODE: F45



## TYPE F45 / F15

Grille with single row of fixed 45° / 15° angle straight horizontal blades.

## TYPE F45D / F15D

Grille with single row of fixed 45° / 15° angle straight horizontal blades, complete with opposed blade damper.

**Also available:**

Code: F45./Frameless.